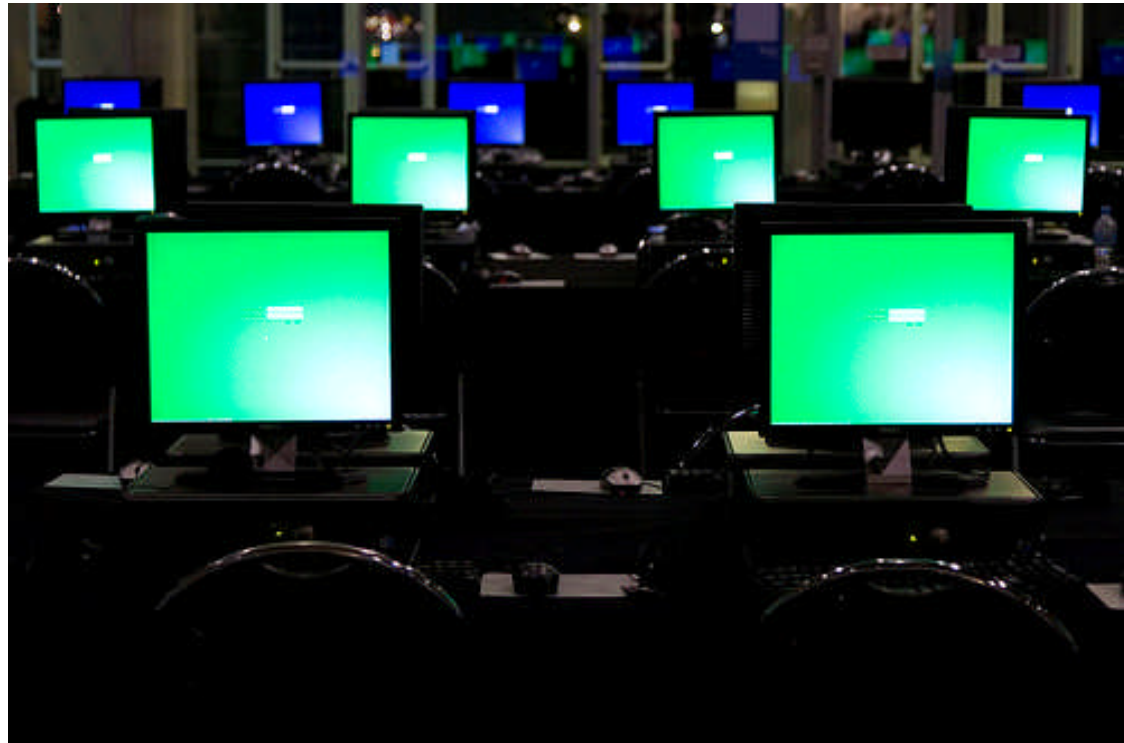




JISC & the SCONUL Shared Services Study

**Rachel Bruce, Acting Director,
e-Infrastructure, JISC Innovation Group**

- e-journals
- e-books
- e-learning
- e-research
- Born digital R & L
- = New processes





Mode of distribution

- **Easy and widespread access to information and resources , anytime, anywhere; a vision with technology and information management at the heart of research and education.**
- **To provide world-class leadership in the innovative use of ICT to support education, research and institutional effectiveness.**

- 1) Provide cost-effective and sustainable shared national services and resources
- 2) Help institutions to improve the efficiency and effectiveness of their corporate and business systems
- 3) Help institutions to improve the quality of learning and teaching and the student experience
- 4) Help institutions to improve the quality, impact and productivity of academic research
- 5) Be a responsive, reflective and learning organisation that demonstrates value for money

JISC Budget Expenditure 2009-10

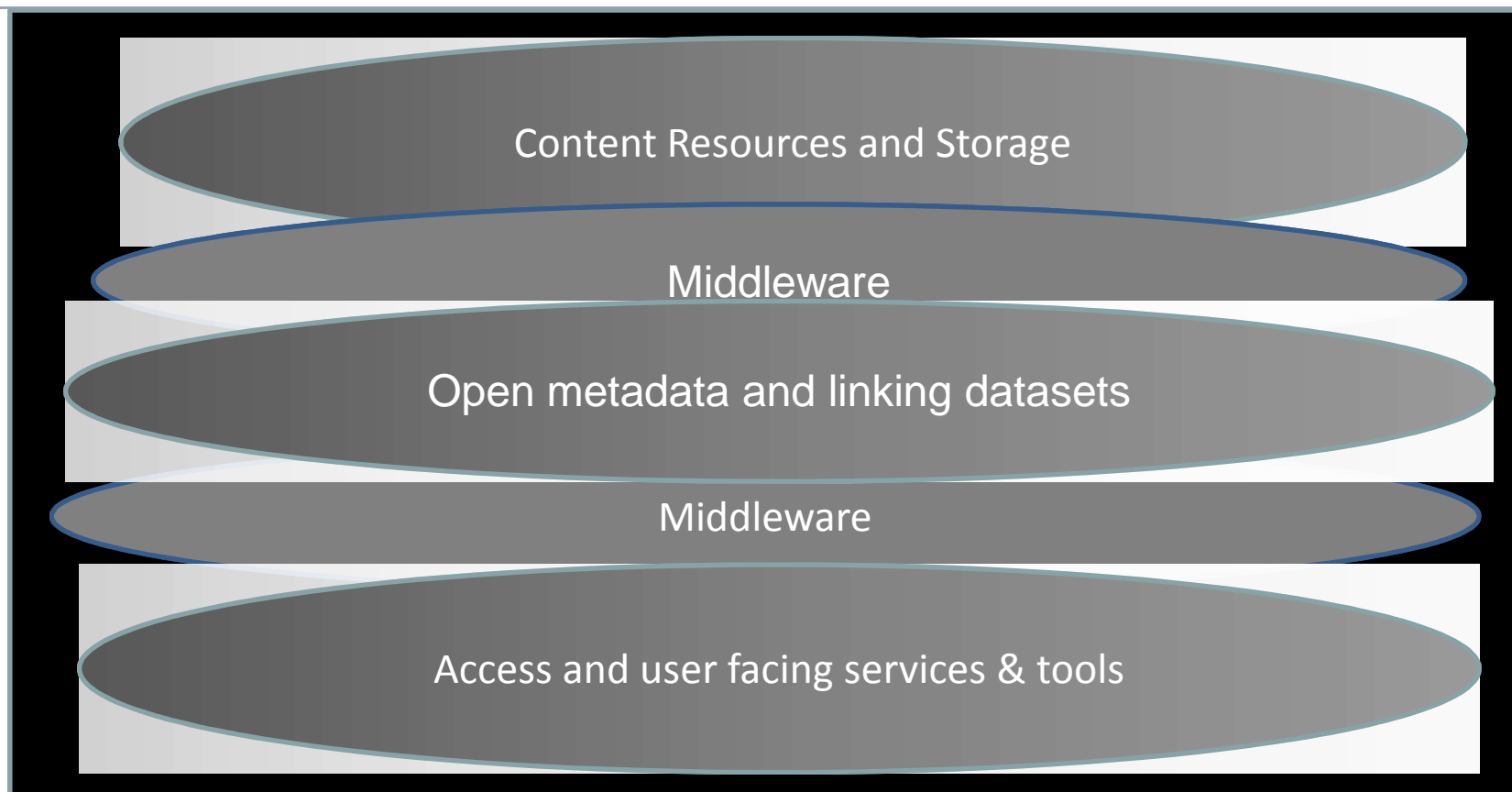
JISC Budget 2009/10

[Core and Capital combined]

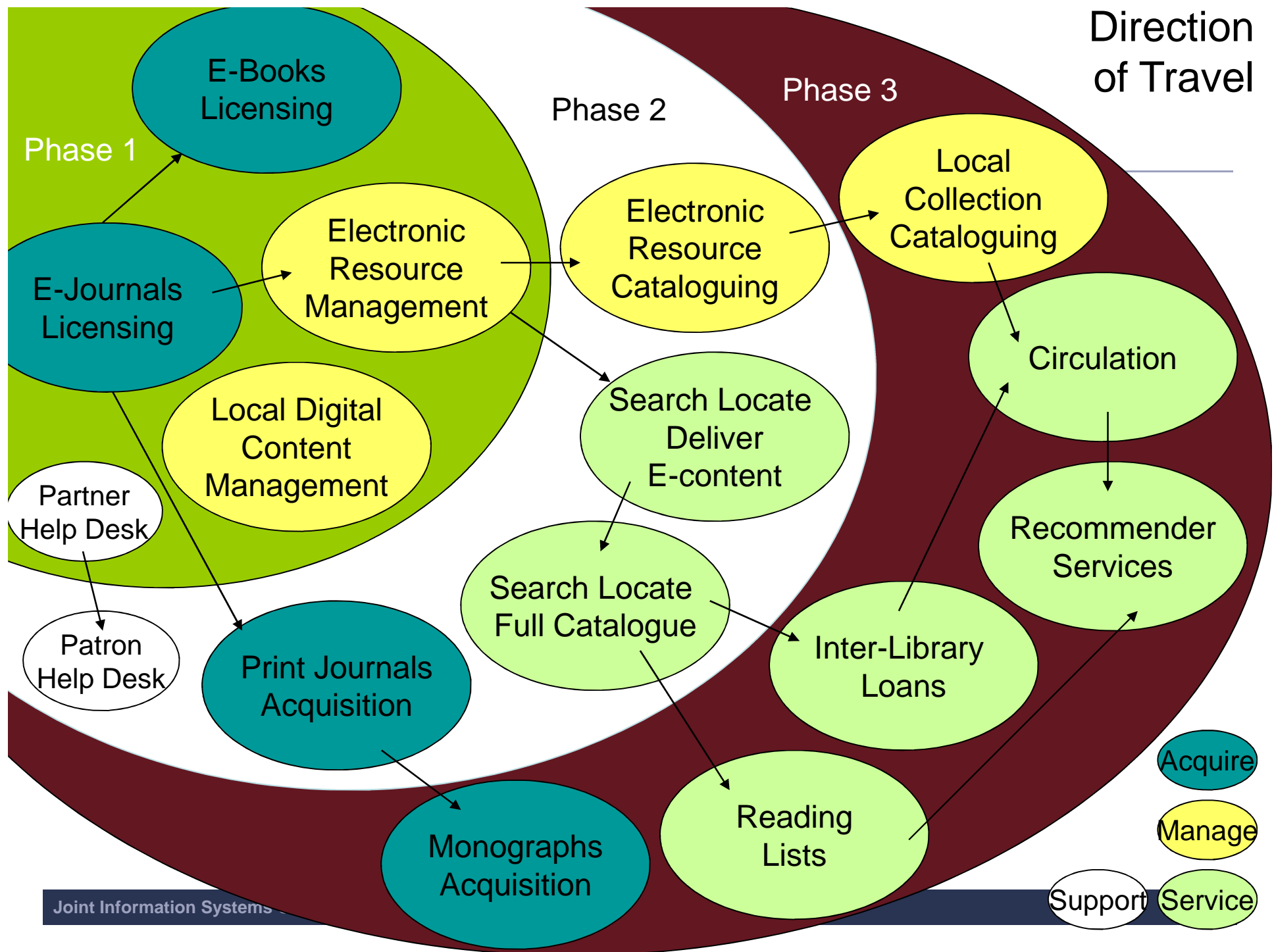
JANET:	£51.29m [43.5%]
Innovation:	£34.64m [29.4%]
Other Services:	£21.42m [18.2%]
Running Costs:	£5.55m [4.7%]
Content:	£5.02m [4.2%]
TOTAL:	£117.92m



JISC **Provide cost-effective and sustainable shared national services and resources**



**Infrastructure to manage, share, discover,
access and preserve digital content**



- JISC Collections negotiates framework deals on behalf of the sector; SHEDL and is examining bloc models that will facilitate national / consortia deals
- Work to develop the standards and electronic licence formats – with Editeur, NISO and the ERMI initiative
- Proto-type electronic licence registry supporting ONIX-PL
- Usage Statistics portal
- Registry of entitlements – being developed to support post cancellation access - PECAN
- Transitions to e-only roadmap (trust in e-j archiving, print on demand, VAT); dynamics of transitions (costs, benefits, drivers, barriers), gaps in access (who doesn't have access?) in partnership with a range of stakeholders – JISC, publishers, RC, RIN, etc.

What have we got? Domain 2: Discovery to Delivery:

- SUNCAT – Serials Union Catalogue – EDINA
- COPAC /RLUK db – Consortium Online Public Access Catalogues - MIMAS
- Open URL Router – EDINA
- Zetoc – BL / MIMAS
- PIRUS project – e-journal and repository usage statistics work
- Various studies and policy work e.g. repositories and OPACS, legal issues around the sharing of bibliographic data.
- Resource Discovery Taskforce ...more later ...

What have we got? Domain 3: Local Library Management:

- Previous completed studies cited in the SCONUL Shared Services study.
- TILE and MOSAIC projects – exploring use of large scale web 2.0 services, and national level re-use of usage data / other related research studies.
- Projects to share good practice in usability, resource discovery and surfacing of resources; encore, primo etc.
- Flexible Service Delivery programme – addressing enterprise systems, what is core and chore ? What can be shared ? How can we share systems and be interoperable?

Resource Discovery Taskforce: A Collaborative Effort



Full list of members at: <http://rdtf.jiscinvolve.org/scope-and-terms-of-reference/>

Principles

Be innovative, be responsive to changing user requirements and take risks

Be coherent, “compelling”, useable

Be interoperable and flexible – exploiting and helping to define international standards and supporting APIs

Be capable of supporting a comprehensive format inclusive content coverage?

Enable personalisation

Be integrated into the web and future global communication structures

Be robust and scalable

Enable UK education and research to be World-class

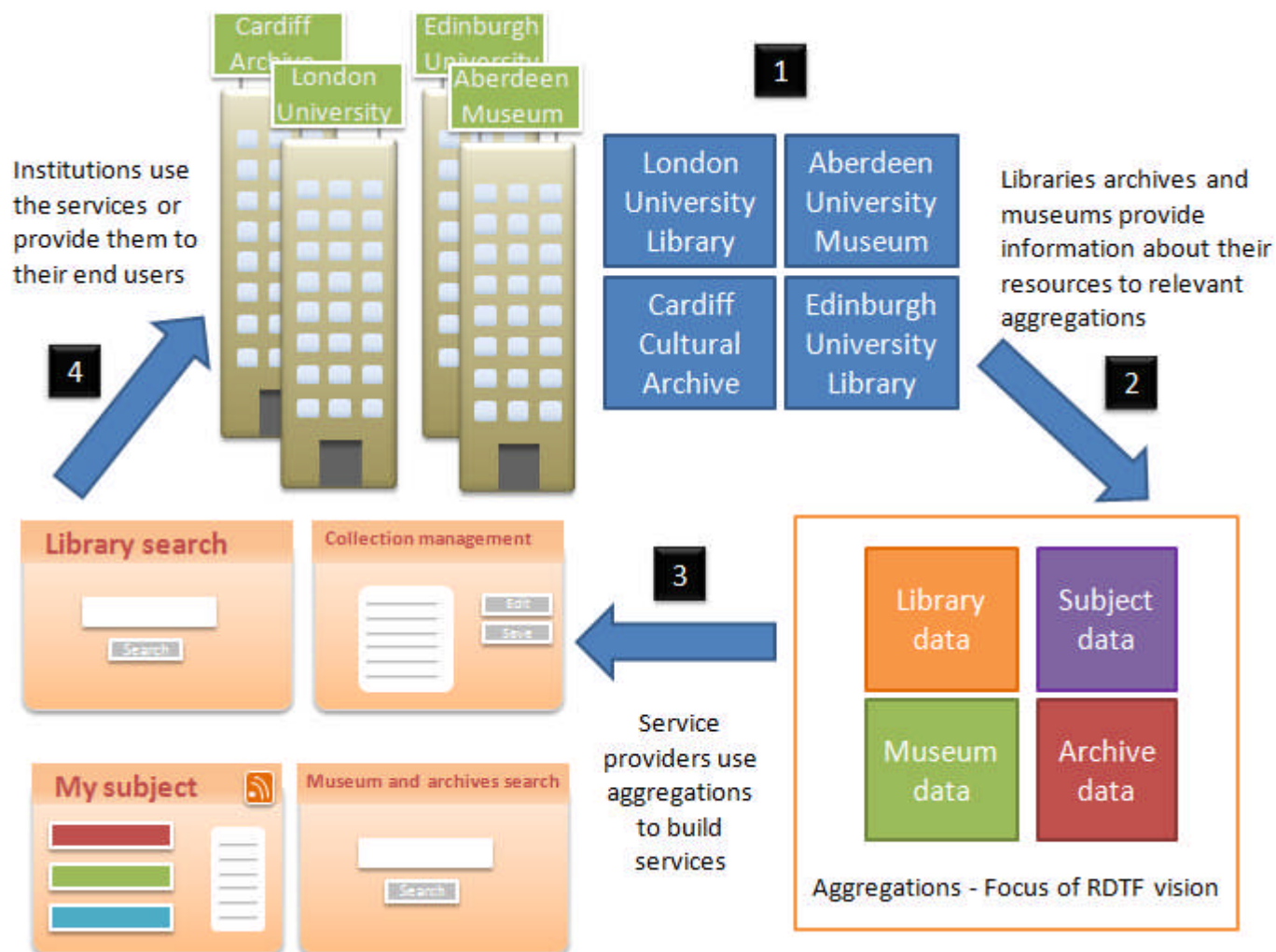
Meet the requirements of key user groups (to be determined) and develop ownership by key user groups.

Be simple to adopt

Be achievable

Resource Discovery Taskforce Vision

- **UK students and researchers will have easy, flexible access to content and services through a collaborative, aggregated and integrated resource discovery and delivery framework which is comprehensive, open and sustainable**

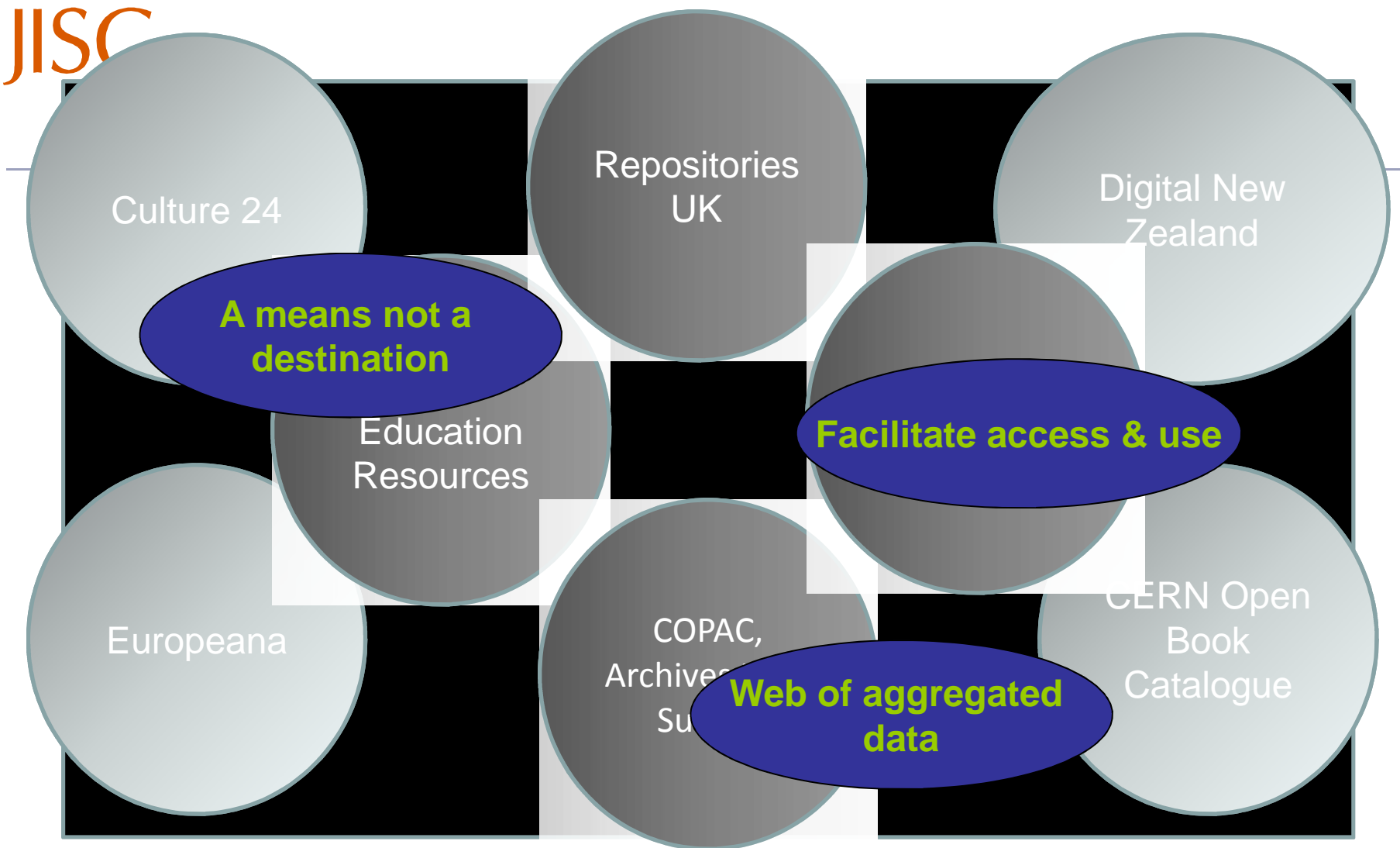


Graphics courtesy of the JISC web2practice project: <http://www.netskills.ac.uk/content/projects/2008/JISC-web2practice/index.html>

- “Aggregation of supply and demand”
- “Making our data work hard, engagement and co-creation”

The (Digital) Library Environment: Ten Years After, Lorcan Dempsey

<http://www.ariadne.ac.uk/issue46/dempsey/>



Aggregation Ecosystem

- **Open metadata** – existing aggregations, new aggregations to be developed.
- **Licensing and sustainability** – a model for service providers, institutions and other organisations – support re-use and reliability.
- **Core standards** so that the metadata for physical and digital objects can be made available in a variety of ways e.g. major search engines, personal environments.



Where next ?

Download from Flickr. Laurie Minor-Penland,
Smithsonian Institute.

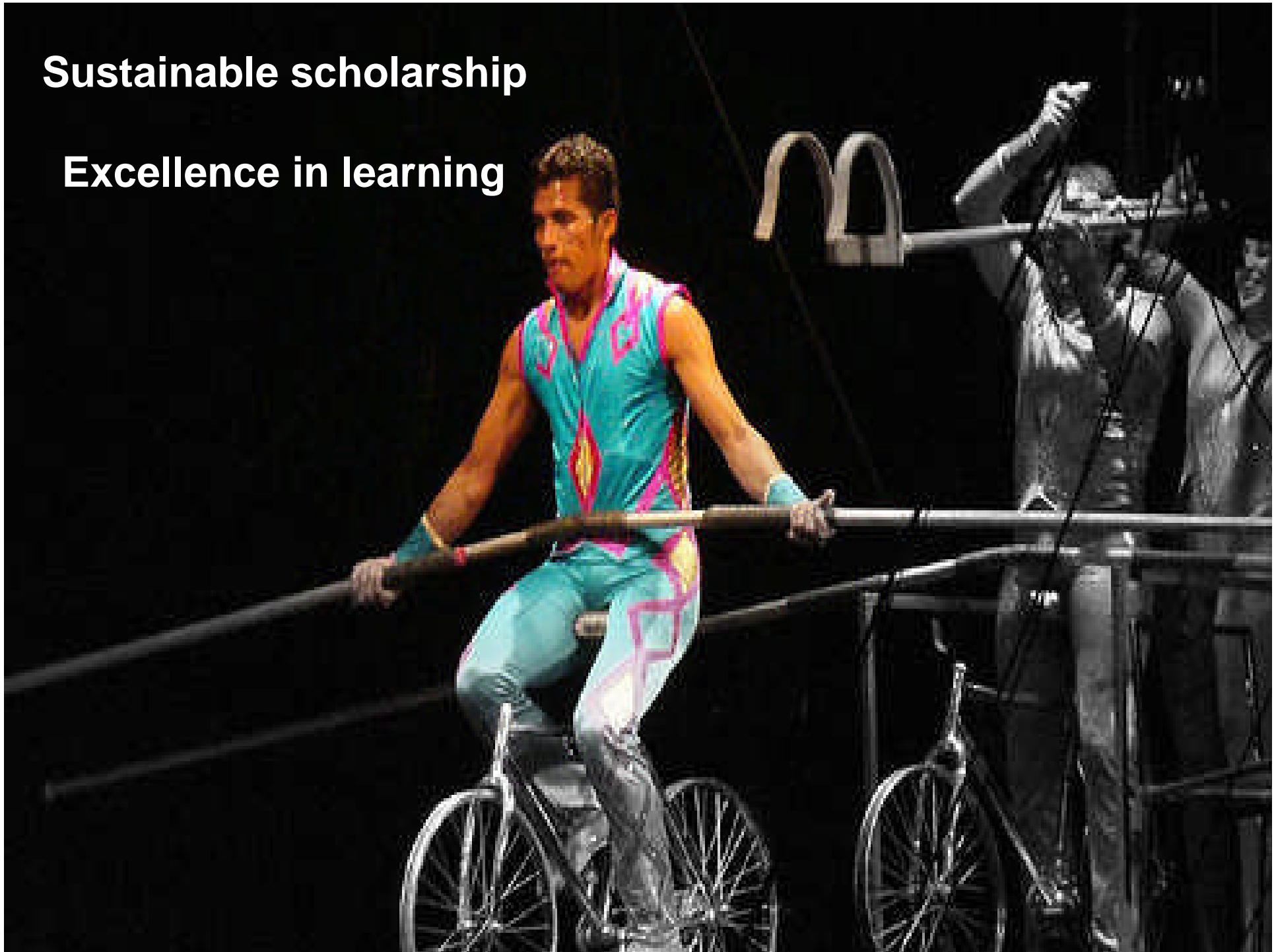
Stepping stones...



- Working with SCONUL members to articulate the LMS 'pain points' and new requirements
- Working with KOLE to document in line with the International e-Framework
- Working with SCONUL members to articulate the requirement for a shared ERM
- Work to understand in detail the cost savings and more effective integration with mission delivery systems e.g. VLE, VRE, repositories, finance ...

Sustainable scholarship

Excellence in learning



- e-everything: <http://www.flickr.com/photos/14922438@N00/225171152/> - yellowfilter
- Tightrope: http://www.flickr.com/photos/tammys_world/1785770650 - Smiles Are Free is Taking Midterms Missing Flickr's photostream
- Web: <http://www.flickr.com/photos/foxypar4/2124673642/> - foxypar4